



MONTHLY MEMBERSHIP PROGRESS REPORT

District 31 I

Results as of: 5/31/2017

GMT: HARVEY WHITLEY

LOCATION NORTH CAROLINA

GMT CA

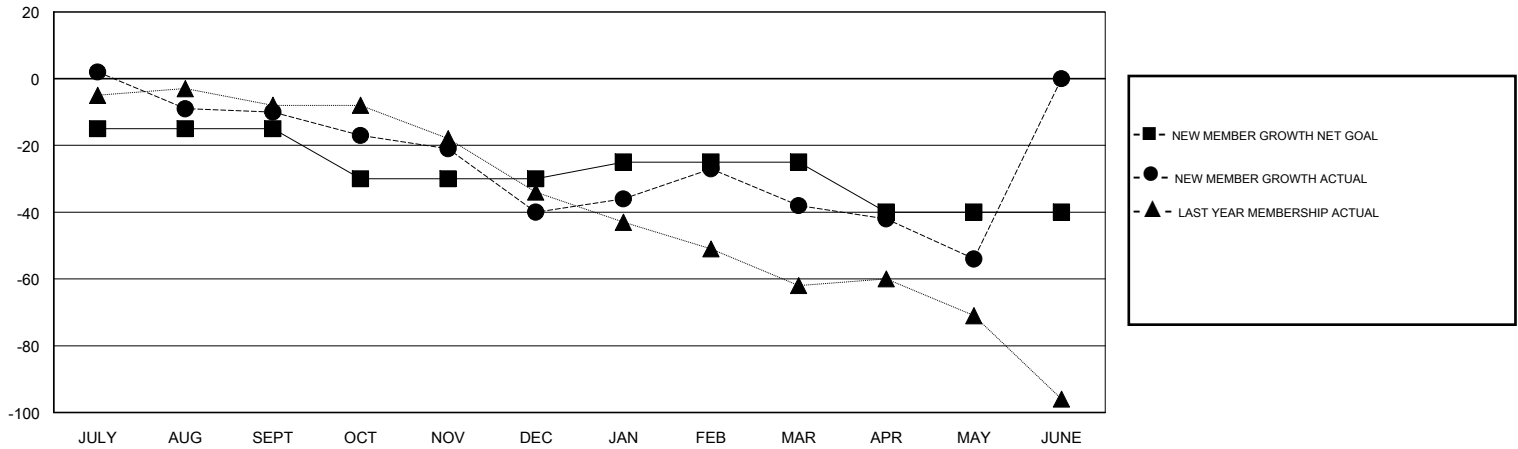
Clubs			
RESULTS FOR 2016-2017			
QUARTER	NEW CLUB GOAL	NEW CLUBS	DROPPED CLUBS
JULY/AUG/SEPT	0	0	0
OCT/NOV/DEC	0	0	1
JAN/FEB/MAR	1	0	0
APR/MAY/JUNE	0	0	1

Members			
RESULTS FOR 2016-2017			
QUARTER	NEW MEMBER GROWTH NET GOAL (not reinstated or transfers)	NEW MEMBER GROWTH ACTUAL (not reinstated or transfers)	DROPPED MEMBERS ACTUAL (including transfers)
JULY/AUG/SEPT	-15	35	45
OCT/NOV/DEC	-15	20	50
JAN/FEB/MAR	5	33	31
APR/MAY/JUNE	-15	17	33

GOALS AND ACTUAL NEW CLUBS CUMULATIVE



GOALS AND ACTUAL MEMBERS CUMULATIVE



DROPPED CLUBS: 2	33 CLUBS OF 59 ADDED 1 OR MORE NEW MEMBERS	GENDER DISTRIBUTION
DROPPED MEMBERS	CLICK HERE FOR CUMULATIVE MEMBERSHIP DATA	MALE 884 (69.72%)
DECEASED 25		FEMALE 384 (30.28%)
CLUB CANCELLED 2		TOTAL FAMILY UNIT MEMBERS 277
OTHER 132		FAMILY MEMBERS PAYING HALF DUES 140
TOTAL 159		